

Month: March'10

**Table 1. Consumer Price Index (CPI) And Inflation Rate
(Point To Point)**

(1995-96=100)

CPI Classification	2006-07	2007-08	2008-09	2008-09			2009-10		
				Jan	Feb	Mar	Jan	Feb	Mar
NATIONAL									
General index	176.06	193.54	206.43	204.04	204.02	204.65	222.38	222.50	222.61
<i>Inflation</i>	7.22	9.93	6.66	6.06	5.81	5.04	8.99	9.06	8.78
Food index	184.18	206.79	221.64	218.56	217.88	217.95	241.65	241.70	241.49
<i>Inflation</i>	8.12	12.28	7.18	6.83	6.15	4.49	10.56	10.93	10.80
Non-food index	165.79	176.26	186.67	185.20	186.11	187.58	197.29	197.53	198.09
<i>Inflation</i>	5.90	6.32	5.91	4.88	5.33	6.11	6.53	6.14	5.60
RURAL									
General index	177.42	195.14	208.46	206.21	206.03	206.35	224.37	224.49	224.53
<i>Inflation</i>	7.30	9.99	6.83	6.39	6.11	5.06	8.81	8.96	8.81
Food index	182.18	203.93	218.38	215.67	214.90	214.66	237.06	237.11	236.87
<i>Inflation</i>	7.96	11.94	7.09	6.92	6.28	4.33	9.92	10.34	10.35
Non-food index	169.33	180.19	191.59	190.13	190.94	192.23	202.78	203.06	203.55
<i>Inflation</i>	6.10	6.41	6.33	5.37	5.79	4.46	6.65	6.35	5.89
URBAN									
General index	172.73	189.65	201.49	198.77	199.14	200.51	217.54	217.64	217.95
<i>Inflation</i>	7.03	9.80	6.24	5.24	5.08	5.00	9.44	9.29	8.70
Food index	189.06	213.73	229.60	225.59	225.15	225.95	252.82	252.89	252.75
<i>Inflation</i>	8.54	13.05	7.43	6.60	5.87	4.86	12.07	12.32	11.86
Non-food index	157.17	166.69	174.69	173.21	174.34	176.27	183.92	184.05	184.78
<i>Inflation</i>	5.34	6.06	4.80	3.58	4.12	5.19	6.18	5.57	4.83

Fig-1: Annual Inflation Rate

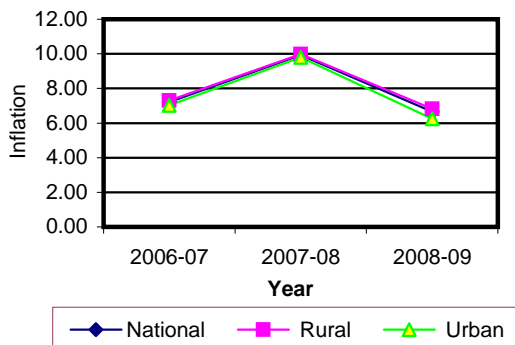


Fig-2: Monthly Inflation Rate

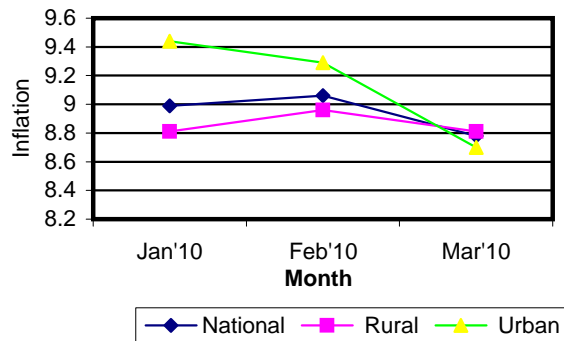


Table 2. Consumer Price Index (CPI) : National

(On Monthly Basis)
(1995-96=100)

CPI Classification	2006-07	2007-08	2008-09	2008-09			2009-10		
				Jan	Feb	Mar	Jan	Feb	Mar
General	176.06	193.54	206.43	204.04	204.02	204.65	222.38	222.50	222.61
	7.22	9.93	6.66	-0.42	-0.01	0.31	0.02	0.05	0.05
1. Food, beverage & tobacco	184.18	206.79	221.64	218.56	217.88	217.95	241.65	241.70	241.49
	8.12	12.28	7.18	-0.94	-0.31	0.03	0.02	0.02	-0.09
2. Non-food	165.79	176.26	186.67	185.20	186.11	187.58	197.29	197.53	198.09
	5.90	6.32	5.91	0.49	0.49	0.79	0.02	0.12	0.28
I. Clothing & footwear	156.79	164.53	173.10	173.82	173.89	175.75	181.83	182.08	182.58
	5.69	4.94	5.21	1.07	0.04	1.07	0.02	0.14	0.27
II. Gross rent, fuel & lighting	162.32	174.70	184.46	182.11	182.78	183.19	191.95	192.12	192.33
	6.78	7.63	5.59	0.17	0.37	0.22	0.01	0.09	0.11
III. Furniture, furnishing, household equipments & operation	162.61	178.56	194.75	193.08	195.53	200.03	215.61	216.15	217.26
	7.54	9.81	9.07	0.91	1.27	2.30	0.04	0.25	0.51
IV. Medical care & health expenses	178.49	185.66	189.25	189.25	189.94	190.76	199.8	199.94	200.42
	5.23	4.02	1.93	0.65	0.36	0.43	0.00	0.07	0.24
V. Transport & communication	201.15	211.01	222.12	220.12	221.32	224.48	234.75	235.18	235.89
	4.95	4.90	5.27	0.12	0.55	1.43	0.02	0.18	0.30
VI. Recreation, entertainment, education & cultural services	171.47	174.86	181.44	179.90	180.38	181.25	192.38	192.70	194.49
	3.66	1.98	3.76	0.03	0.27	0.48	0.02	0.17	0.93
VII. Misc. goods & services	151.44	166.69	188.84	186.85	189.99	192.65	208.99	209.07	209.69
	5.72	10.07	13.29	1.26	1.68	1.40	0.01	0.04	0.30

Note : Figures in italics indicate inflation over previous year/month

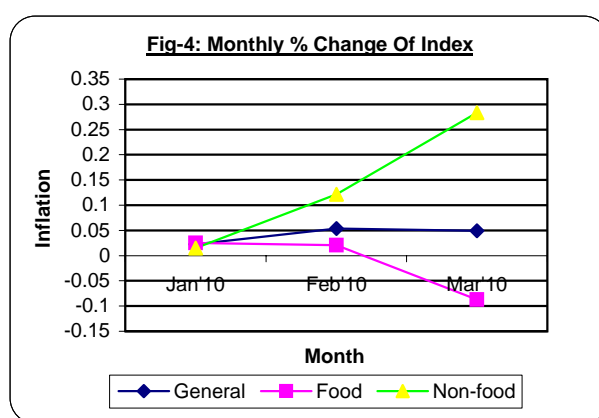
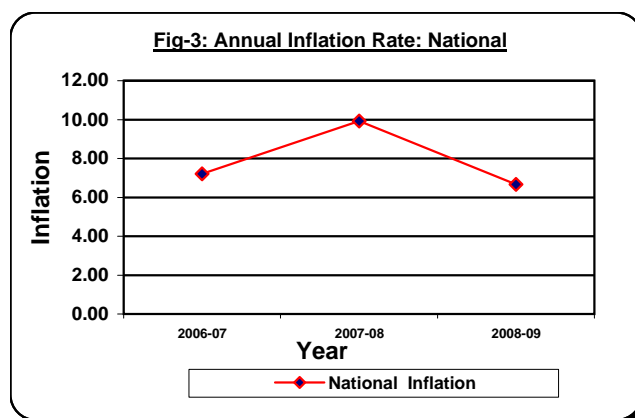


Table 3. Consumer Price Index (CPI) : Rural

(On Monthly Basis)

(1995-96=100)

CPI Classification	2006-07	2007-08	2008-09	2008-09			2009-10		
				Jan	Feb	Mar	Jan	Feb	Mar
General	177.42	195.14	208.46	206.21	206.03	206.35	224.37	224.49	224.53
	7.29	9.99	6.83	-0.47	-0.09	0.16	0.03	0.05	0.02
1. Food, beverage & tobacco	182.18	203.93	218.38	215.67	214.90	214.66	237.06	237.11	236.87
	7.95	11.94	7.09	-0.97	-0.36	-0.11	0.03	0.02	-0.10
2. Non-food	169.33	180.19	191.59	190.13	190.94	192.23	202.78	203.06	203.55
	6.10	6.41	6.33	0.52	0.43	0.68	0.01	0.14	0.24
I. Clothing & footwear	155.88	162.08	169.68	170.68	170.71	171.72	177.57	177.91	178.53
	5.19	3.98	4.69	1.29	0.02	0.59	0.00	0.19	0.35
II. Gross rent, fuel & lighting	172.14	185.85	199.33	196.59	197.13	197.61	207.91	208.12	208.28
	7.17	7.96	7.25	0.07	0.27	0.24	0.01	0.10	0.08
III. Furniture, furnishing, household equipments & operation	160.38	174.31	189.12	187.34	189.66	194.85	207.92	208.48	209.33
	7.31	8.69	8.50	1.05	1.24	2.74	0.00	0.27	0.41
IV. Medical care & health expenses	185.41	191.72	194.47	194.66	194.80	195.73	203.97	204.02	204.11
	5.93	3.40	1.43	0.66	0.07	0.48	0.00	0.02	0.04
V. Transport & communication	201.06	211.49	219.63	218.13	219.65	222.38	233.05	233.55	233.95
	5.10	5.19	3.85	0.10	0.70	1.24	0.03	0.21	0.17
VI. Recreation, entertainment, education & cultural services	174.74	178.03	184.66	183.12	186.62	183.93	197.12	197.52	199.79
	3.49	1.88	3.72	0.04	0.27	0.17	0.02	0.20	1.15
VII. Misc. goods & services	147.95	164.03	184.85	183.01	185.41	187.48	205.12	205.19	205.36
	6.13	10.87	12.69	1.47	1.31	1.12	0.01	0.03	0.08

Note : Figures in italics indicate inflation over previous year/month

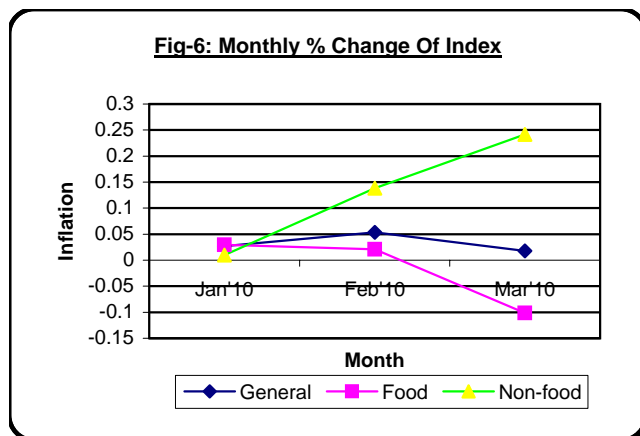
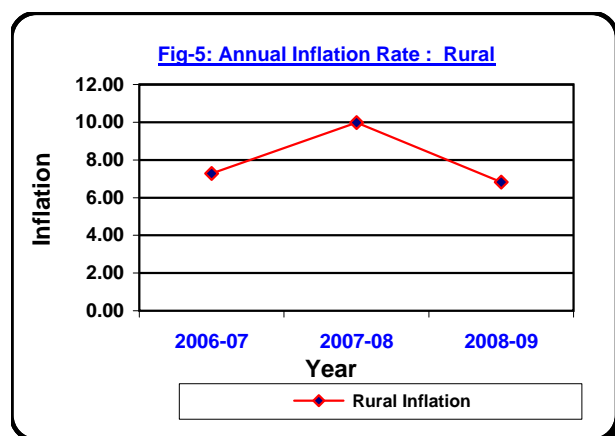


Table 4. Consumer Price Index (CPI) : Urban

(On Monthly Basis)

(1995-96=100)

CPI Classification	2006-07	2007-08	2008-09	2008-09			2009-10		
				Jan	Feb	Mar	Jan	Feb	Mar
General	172.73	189.65	201.49	198.77	199.14	200.51	217.54	217.64	217.95
	7.03	<i>9.80</i>	<i>6.24</i>	<i>-0.30</i>	<i>0.19</i>	<i>0.69</i>	<i>0.02</i>	<i>0.05</i>	<i>0.14</i>
1. Food, beverage & tobacco	189.06	213.73	229.60	225.59	225.15	225.95	252.82	252.89	252.75
	8.54	<i>13.05</i>	<i>7.43</i>	<i>-0.87</i>	<i>-0.20</i>	<i>0.36</i>	<i>0.02</i>	<i>0.03</i>	<i>-0.06</i>
2. Non-food	157.17	166.69	174.69	173.21	174.34	176.27	183.92	184.05	184.78
	5.34	<i>6.06</i>	<i>4.80</i>	<i>0.42</i>	<i>0.65</i>	<i>1.11</i>	<i>0.03</i>	<i>0.07</i>	<i>0.40</i>
I. Clothing & footwear	159.02	170.51	181.42	181.45	181.63	185.58	192.19	192.22	192.45
	6.93	<i>7.23</i>	<i>6.40</i>	<i>0.56</i>	<i>0.10</i>	<i>2.17</i>	<i>0.05</i>	<i>0.02</i>	<i>0.12</i>
II. Gross rent, fuel & lighting	138.41	147.54	148.24	146.86	147.85	148.09	153.09	153.16	153.49
	5.60	<i>6.60</i>	<i>0.47</i>	<i>0.51</i>	<i>0.67</i>	<i>0.16</i>	<i>0.03</i>	<i>0.05</i>	<i>0.22</i>
III. Furniture, furnishing, household equipments & operation	168.05	188.92	208.46	207.05	209.81	212.66	234.34	234.84	236.57
	8.08	<i>12.42</i>	<i>10.34</i>	<i>0.60</i>	<i>1.33</i>	<i>1.36</i>	<i>0.11</i>	<i>0.21</i>	<i>0.74</i>
IV. Medical care & health expenses	161.64	170.90	176.54	176.06	178.09	178.65	189.64	190.02	191.45
	3.30	<i>5.73</i>	<i>3.30</i>	<i>0.60</i>	<i>1.15</i>	<i>0.31</i>	<i>0.01</i>	<i>0.20</i>	<i>0.75</i>
V. Transport & communication	201.38	209.84	228.18	224.96	225.37	229.59	238.89	239.15	240.60
	4.60	<i>4.20</i>	<i>8.74</i>	<i>0.16</i>	<i>0.18</i>	<i>1.87</i>	<i>0.00</i>	<i>0.11</i>	<i>0.61</i>
VI. Recreation, entertainment, education & cultural services	163.51	167.16	173.59	172.05	172.50	174.71	180.84	180.96	181.59
	4.11	<i>2.23</i>	<i>3.85</i>	<i>0.02</i>	<i>0.26</i>	<i>1.28</i>	<i>0.02</i>	<i>0.07</i>	<i>0.35</i>
VII. Misc. goods & services	159.93	173.16	198.58	196.20	201.15	205.23	218.43	218.51	220.24
	4.79	<i>8.27</i>	<i>14.68</i>	<i>0.77</i>	<i>2.52</i>	<i>2.03</i>	<i>0.01</i>	<i>0.04</i>	<i>0.79</i>

Note : Figures in italics indicate inflation over previous year/month

