

Month : February'2010

**Table 1. Consumer Price Index (CPI) And Inflation Rate
(Point To Point)**

(1995-96=100)

CPI Classification	2006-07	2007-08	2008-09	2008-09			2009-10		
				Dec	Jan	Feb	Dec	Jan	Feb
NATIONAL									
General index	176.06	193.54	206.43	204.90	204.04	204.02	222.33	222.38	222.50
<i>Inflation</i>	7.22	9.93	6.66	6.03	6.06	5.81	8.51	8.99	9.06
Food index	184.18	206.79	221.64	220.64	218.56	217.88	241.59	241.65	241.70
<i>Inflation</i>	8.12	12.28	7.18	6.83	6.83	6.15	9.50	10.56	10.93
Non-food index	165.79	176.26	186.67	184.29	185.20	186.11	197.26	197.29	197.53
<i>Inflation</i>	5.90	6.32	5.91	4.76	4.88	5.33	7.04	6.53	6.14
RURAL									
General index	177.42	195.14	208.46	207.18	206.21	206.03	224.31	224.37	224.49
<i>Inflation</i>	7.30	9.99	6.83	6.26	6.39	6.11	8.27	8.81	8.96
Food index	182.18	203.93	218.38	217.79	215.67	214.90	236.99	237.06	237.11
<i>Inflation</i>	7.96	11.94	7.09	6.86	6.92	6.28	8.82	9.92	10.34
Non-food index	169.33	180.19	191.59	189.14	190.13	190.94	202.76	202.78	203.06
<i>Inflation</i>	6.10	6.41	6.33	5.10	5.37	5.79	7.20	6.65	6.35
URBAN									
General index	172.73	189.65	201.49	199.36	198.77	199.14	217.50	217.54	217.64
<i>Inflation</i>	7.03	9.80	6.24	5.45	5.24	5.08	9.10	9.44	9.29
Food index	189.06	213.73	229.60	227.57	225.59	225.15	252.78	252.82	252.89
<i>Inflation</i>	8.54	13.05	7.43	6.74	6.60	5.87	11.08	12.07	12.32
Non-food index	157.17	166.69	174.69	172.48	173.21	174.34	183.87	183.92	184.05
<i>Inflation</i>	5.34	6.06	4.80	3.88	3.58	4.12	6.60	6.18	5.57

Fig-1: Annual Inflation Rate

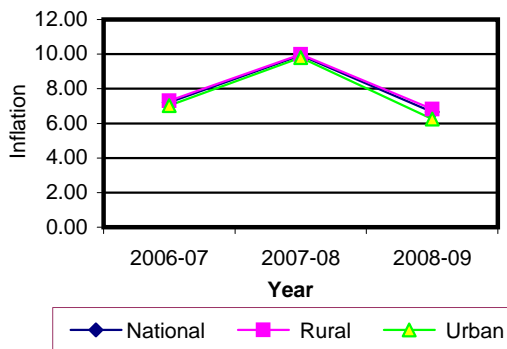


Fig-2: Monthly Inflation Rate

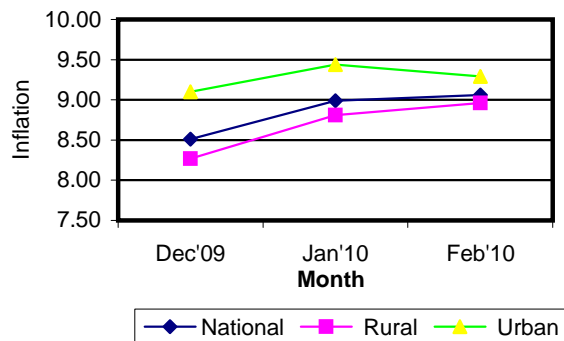


Table 2. Consumer Price Index (CPI) : National

(On Monthly Basis)
(1995-96=100)

CPI Classification	2006-07	2007-08	2008-09	2008-09			2009-10		
				Dec	Jan	Feb	Dec	Jan	Feb
General	176.06	193.54	206.43	204.90	204.04	204.02	222.33	222.38	222.50
	<i>7.22</i>	<i>9.93</i>	<i>6.66</i>	<i>-1.08</i>	<i>-0.42</i>	<i>-0.01</i>	<i>0.09</i>	<i>0.02</i>	<i>0.05</i>
1. Food, beverage & tobacco	184.18	206.79	221.64	220.64	218.56	217.88	241.59	241.65	241.70
	<i>8.12</i>	<i>12.28</i>	<i>7.18</i>	<i>-1.49</i>	<i>-0.94</i>	<i>-0.31</i>	<i>0.02</i>	<i>0.02</i>	<i>0.02</i>
2. Non-food	165.79	176.26	186.67	184.29	185.20	186.11	197.26	197.29	197.53
	<i>5.90</i>	<i>6.32</i>	<i>5.91</i>	<i>-0.36</i>	<i>0.49</i>	<i>0.49</i>	<i>0.20</i>	<i>0.02</i>	<i>0.12</i>
I. Clothing & footwear	156.79	164.53	173.10	171.98	173.82	173.89	181.80	181.83	182.08
	<i>5.69</i>	<i>4.94</i>	<i>5.21</i>	<i>0.14</i>	<i>1.07</i>	<i>0.04</i>	<i>0.16</i>	<i>0.02</i>	<i>0.14</i>
II. Gross rent, fuel & lighting	162.32	174.70	184.46	181.8	182.11	182.78	191.93	191.95	192.12
	<i>6.78</i>	<i>7.63</i>	<i>5.59</i>	<i>-1.03</i>	<i>0.17</i>	<i>0.37</i>	<i>0.15</i>	<i>0.01</i>	<i>0.09</i>
III. Furniture, furnishing, household equipments & operation	162.61	178.56	194.75	191.34	193.08	195.53	215.53	215.61	216.15
	<i>7.54</i>	<i>9.81</i>	<i>9.07</i>	<i>0.29</i>	<i>0.91</i>	<i>1.27</i>	<i>0.40</i>	<i>0.04</i>	<i>0.25</i>
IV. Medical care & health expenses	178.49	185.66	189.25	188.03	189.25	189.94	199.80	199.8	199.94
	<i>5.23</i>	<i>4.02</i>	<i>1.93</i>	<i>0.03</i>	<i>0.65</i>	<i>0.36</i>	<i>0.13</i>	<i>0.00</i>	<i>0.07</i>
V. Transport & communication	201.15	211.01	222.12	219.86	220.12	221.32	234.71	234.75	235.18
	<i>4.95</i>	<i>4.90</i>	<i>5.27</i>	<i>-0.15</i>	<i>0.12</i>	<i>0.55</i>	<i>0.32</i>	<i>0.02</i>	<i>0.18</i>
VI. Recreation, entertainment, education & cultural services	171.47	174.86	181.44	179.84	179.90	180.38	192.35	192.38	192.70
	<i>3.66</i>	<i>1.98</i>	<i>3.76</i>	<i>0.08</i>	<i>0.03</i>	<i>0.27</i>	<i>0.31</i>	<i>0.02</i>	<i>0.17</i>
VII. Misc. goods & services	151.44	166.69	188.84	184.53	186.85	189.99	208.97	208.99	209.07
	<i>5.72</i>	<i>10.07</i>	<i>13.29</i>	<i>0.26</i>	<i>1.26</i>	<i>1.68</i>	<i>0.11</i>	<i>0.01</i>	<i>0.04</i>

Note : Figures in italics indicate inflation over previous year/month

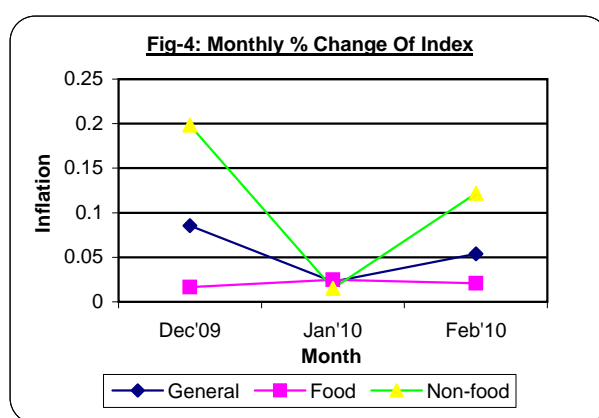
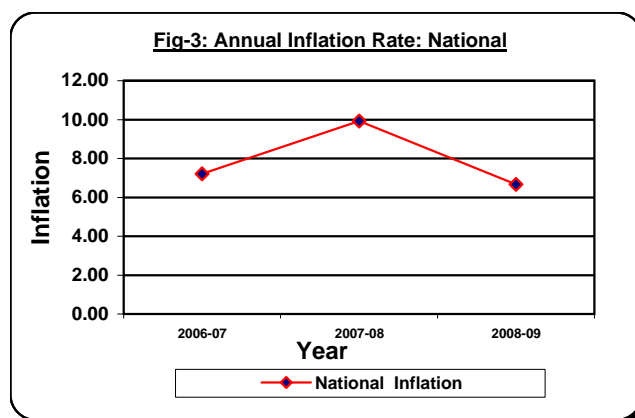


Table 3. Consumer Price Index (CPI) : Rural

(On Monthly Basis)

(1995-96=100)

CPI Classification	2006-07	2007-08	2008-09	2008-09			2009-10		
				Dec	Jan	Feb	Dec	Jan	Feb
General	177.42	195.14	208.46	207.18	206.21	206.03	224.31	224.37	224.49
	7.29	9.99	6.83	-1.26	-0.47	-0.09	0.07	0.03	0.05
1. Food, beverage & tobacco	182.18	203.93	218.38	217.79	215.67	214.90	236.99	237.06	237.11
	7.95	11.94	7.09	-1.65	-0.97	-0.36	0.02	0.03	0.02
2. Non-food	169.33	180.19	191.59	189.14	190.13	190.94	202.76	202.78	203.06
	6.10	6.41	6.33	-0.48	0.52	0.43	0.16	0.01	0.14
I. Clothing & footwear	155.88	162.08	169.68	168.51	170.68	170.71	177.57	177.57	177.91
	5.19	3.98	4.69	0.13	1.29	0.02	0.16	0.00	0.19
II. Gross rent, fuel & lighting	172.14	185.85	199.33	196.46	196.59	197.13	207.89	207.91	208.12
	7.17	7.96	7.25	-1.31	0.07	0.27	0.10	0.01	0.10
III. Furniture, furnishing, household equipments & operation	160.38	174.31	189.12	185.40	187.34	189.66	207.91	207.92	208.48
	7.31	8.69	8.50	0.19	1.05	1.24	0.45	0.00	0.27
IV. Medical care & health expenses	185.41	191.72	194.47	193.38	194.66	194.80	203.97	203.97	204.02
	5.93	3.40	1.43	0.04	0.66	0.07	0.15	0.00	0.02
V. Transport & communication	201.06	211.49	219.63	217.91	218.13	219.65	232.99	233.05	233.55
	5.10	5.19	3.85	-0.01	0.10	0.70	0.26	0.03	0.21
VI. Recreation, entertainment, education & cultural services	174.74	178.03	184.66	183.05	183.12	186.62	197.09	197.12	197.52
	3.49	1.88	3.72	0.01	0.04	0.27	0.34	0.02	0.20
VII. Misc. goods & services	147.95	164.03	184.85	180.35	183.01	185.41	205.10	205.12	205.19
	6.13	10.87	12.69	0.29	1.47	1.31	0.01	0.01	0.03

Note : Figures in italics indicate inflation over previous year/month

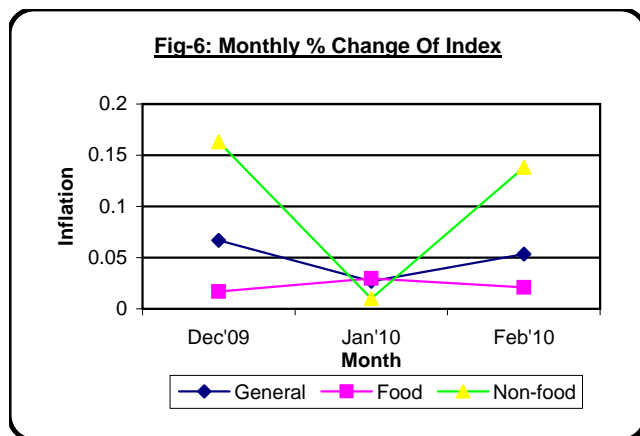
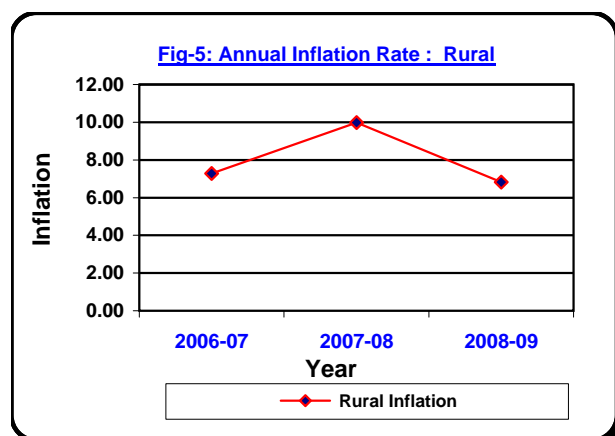


Table 4. Consumer Price Index (CPI) : Urban

(On Monthly Basis)

(1995-96=100)

CPI Classification	2006-07	2007-08	2008-09	2008-09			2009-10		
				Dec	Jan	Feb	Dec	Jan	Feb
General	172.73	189.65	201.49	199.36	198.77	199.14	217.50	217.54	217.64
	7.03	9.80	6.24	-0.63	-0.30	0.19	0.13	0.02	0.05
1. Food, beverage & tobacco	189.06	213.73	229.60	227.57	225.59	225.15	252.78	252.82	252.89
	8.54	13.05	7.43	-1.11	-0.87	-0.20	0.01	0.02	0.03
2. Non-food	157.17	166.69	174.69	172.48	173.21	174.34	183.87	183.92	184.05
	5.34	6.06	4.80	-0.02	0.42	0.65	0.29	0.03	0.07
I. Clothing & footwear	159.02	170.51	181.42	180.44	181.45	181.63	192.09	192.19	192.22
	6.93	7.23	6.40	0.17	0.56	0.10	0.15	0.05	0.02
II. Gross rent, fuel & lighting	138.41	147.54	148.24	146.11	146.86	147.85	153.05	153.09	153.16
	5.60	6.60	0.47	-0.11	0.51	0.67	0.29	0.03	0.05
III. Furniture, furnishing, household equipments & operation	168.05	188.92	208.46	205.81	207.05	209.81	234.09	234.34	234.84
	8.08	12.42	10.34	0.50	0.60	1.33	0.27	0.11	0.21
IV. Medical care & health expenses	161.64	170.90	176.54	175.01	176.06	178.09	189.63	189.64	190.02
	3.30	5.73	3.30	0.01	0.60	1.15	0.04	0.01	0.20
V. Transport & communication	201.38	209.84	228.18	224.60	224.96	225.37	238.89	238.89	239.15
	4.60	4.20	8.74	-0.45	0.16	0.18	0.48	0.00	0.11
VI. Recreation, entertainment, education & cultural services	163.51	167.16	173.59	172.01	172.05	172.50	180.80	180.84	180.96
	4.11	2.23	3.85	0.27	0.02	0.26	0.26	0.02	0.07
VII. Misc. goods & services	159.93	173.16	198.58	194.70	196.20	201.15	218.41	218.43	218.51
	4.79	8.27	14.68	0.16	0.77	2.52	0.32	0.01	0.04

Note : Figures in italics indicate inflation over previous year/month

