

Month : January'2010

**Table 1. Consumer Price Index (CPI) And Inflation Rate
(Point To Point)**

(1995-96=100)

CPI Classification	2006-07	2007-08	2008-09	2008-09			2009-10		
				Nov	Dec	Jan	Nov	Dec	Jan
NATIONAL									
General index	176.06	193.54	206.43	207.14	204.90	204.04	222.14	222.33	222.38
<i>Inflation</i>	7.22	9.93	6.66	6.12	6.03	6.06	7.24	8.51	8.99
Food index	184.18	206.79	221.64	223.98	220.64	218.56	241.55	241.59	241.65
<i>Inflation</i>	8.12	12.28	7.18	6.68	6.83	6.83	7.84	9.50	10.56
Non-food index	165.79	176.26	186.67	184.95	184.29	185.20	196.87	197.26	197.29
<i>Inflation</i>	5.90	6.32	5.91	5.25	4.76	4.88	6.44	7.04	6.53
RURAL									
General index	177.42	195.14	208.46	209.82	207.18	206.21	224.16	224.31	224.37
<i>Inflation</i>	7.30	9.99	6.83	6.40	6.26	6.39	6.83	8.27	8.81
Food index	182.18	203.93	218.38	221.45	217.79	215.67	236.95	236.99	237.06
<i>Inflation</i>	7.96	11.94	7.09	6.77	6.86	6.92	7.00	8.82	9.92
Non-food index	169.33	180.19	191.59	190.06	189.14	190.13	202.43	202.76	202.78
<i>Inflation</i>	6.10	6.41	6.33	5.68	5.10	5.37	6.51	7.20	6.65
URBAN									
General index	172.73	189.65	201.49	200.63	199.36	198.77	217.22	217.50	217.54
<i>Inflation</i>	7.03	9.80	6.24	5.43	5.45	5.24	8.27	9.10	9.44
Food index	189.06	213.73	229.60	230.13	227.57	225.59	252.76	252.78	252.82
<i>Inflation</i>	8.54	13.05	7.43	6.48	6.74	6.60	9.83	11.08	12.07
Non-food index	157.17	166.69	174.69	172.52	172.48	173.21	183.34	183.87	183.92
<i>Inflation</i>	5.34	6.06	4.80	4.13	3.88	3.58	6.27	6.60	6.18

Fig-1: Annual Inflation Rate

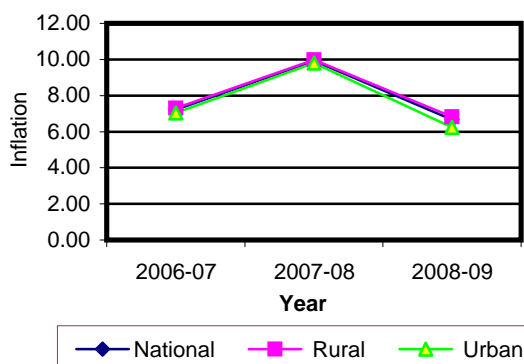


Fig-2: Monthly Inflation Rate

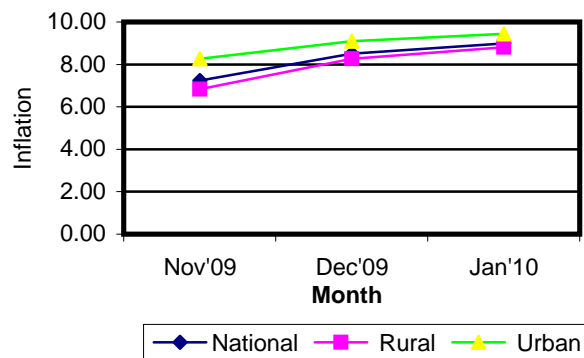


Table 2. Consumer Price Index (CPI) : National

(On Monthly Basis)

(1995-96=100)

CPI Classification	2006-07	2007-08	2008-09	2008-09			2009-10		
				Nov	Dec	Jan	Nov	Dec	Jan
General	176.06	193.54	206.43	207.14	204.90	204.04	222.14	222.33	222.38
	7.22	9.93	6.66	<i>-1.04</i>	<i>-1.08</i>	<i>-0.42</i>	<i>-0.55</i>	<i>0.09</i>	0.02
1. Food, beverage & tobacco	184.18	206.79	221.64	223.98	220.64	218.56	241.55	241.59	241.65
	8.12	12.28	7.18	<i>-1.28</i>	<i>-1.49</i>	<i>-0.94</i>	<i>-1.22</i>	<i>0.02</i>	0.02
2. Non-food	165.79	176.26	186.67	184.95	184.29	185.20	196.87	197.26	197.29
	5.90	6.32	5.91	<i>-0.63</i>	<i>-0.36</i>	0.49	<i>0.67</i>	<i>0.20</i>	0.02
I. Clothing & footwear	156.79	164.53	173.10	171.74	171.98	173.82	181.51	181.80	181.83
	5.69	4.94	5.21	<i>0.14</i>	<i>0.14</i>	1.07	<i>1.04</i>	<i>0.16</i>	0.02
II. Gross rent, fuel & lighting	162.32	174.70	184.46	183.70	181.8	182.11	191.65	191.93	191.95
	6.78	7.63	5.59	<i>-1.47</i>	<i>-1.03</i>	0.17	<i>0.85</i>	<i>0.15</i>	0.01
III. Furniture, furnishing, household equipments & operation	162.61	178.56	194.75	190.79	191.34	193.08	214.68	215.53	215.61
	7.54	9.81	9.07	<i>0.05</i>	<i>0.29</i>	0.91	<i>0.89</i>	<i>0.40</i>	0.04
IV. Medical care & health expenses	178.49	185.66	189.25	187.98	188.03	189.25	199.55	199.80	199.8
	5.23	4.02	1.93	<i>0.01</i>	<i>0.03</i>	0.65	<i>0.26</i>	<i>0.13</i>	0.00
V. Transport & communication	201.15	211.01	222.12	220.18	219.86	220.12	233.95	234.71	234.75
	4.95	4.90	5.27	<i>-0.38</i>	<i>-0.15</i>	0.12	<i>0.34</i>	<i>0.32</i>	0.02
VI. Recreation, entertainment, education & cultural services	171.47	174.86	181.44	179.69	179.84	179.90	191.75	192.35	192.38
	3.66	1.98	3.76	<i>0.03</i>	<i>0.08</i>	0.03	<i>0.06</i>	<i>0.31</i>	0.02
VII. Misc. goods & services	151.44	166.69	188.84	184.06	184.53	186.85	208.75	208.97	208.99
	5.72	10.07	13.29	<i>0.12</i>	<i>0.26</i>	1.26	<i>0.58</i>	<i>0.11</i>	0.01

Note : Figures in italics indicate inflation over previous year/month

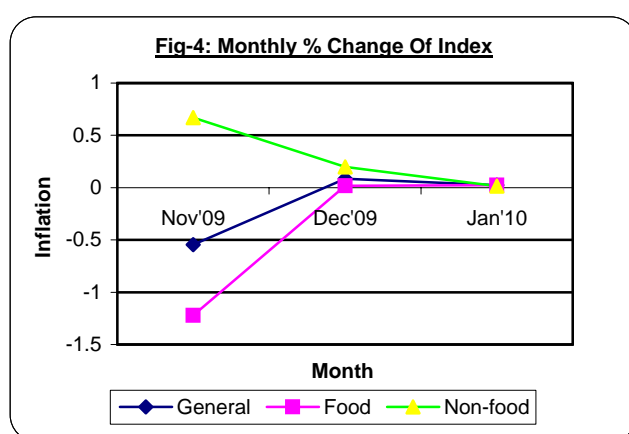
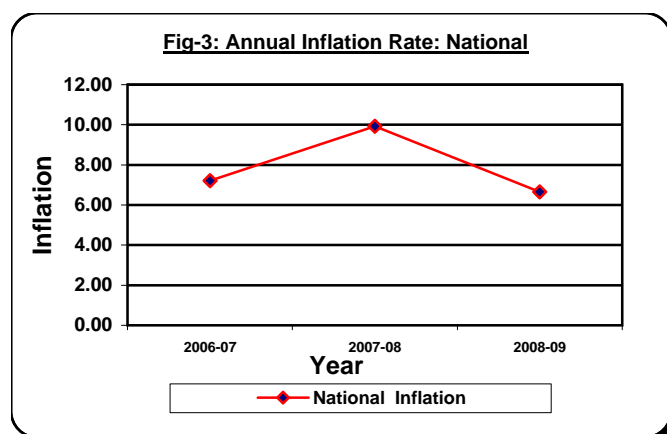


Table 3. Consumer Price Index (CPI) : Rural

(On Monthly Basis)

(1995-96=100)

CPI Classification	2006-07	2007-08	2008-09	2008-09			2009-10		
				Nov	Dec	Jan	Nov	Dec	Jan
General	177.42	195.14	208.46	209.82	207.18	206.21	224.16	224.31	224.37
	7.29	9.99	6.83	-0.83	-1.26	-0.47	-0.63	0.07	0.03
1. Food, beverage & tobacco	182.18	203.93	218.38	221.45	217.79	215.67	236.95	236.99	237.06
	7.95	11.94	7.09	-1.01	-1.65	-0.97	-1.25	0.02	0.03
2. Non-food	169.33	180.19	191.59	190.06	189.14	190.13	202.43	202.76	202.78
	6.10	6.41	6.33	-0.47	-0.48	0.52	0.64	0.16	0.01
I. Clothing & footwear	155.88	162.08	169.68	168.29	168.51	170.68	177.28	177.57	177.57
	5.19	3.98	4.69	0.19	0.13	1.29	0.73	0.16	0.00
II. Gross rent, fuel & lighting	172.14	185.85	199.33	199.07	196.46	196.59	207.69	207.89	207.91
	7.17	7.96	7.25	-1.25	-1.31	0.07	0.87	0.10	0.01
III. Furniture, furnishing, household equipments & operation	160.38	174.31	189.12	185.04	185.40	187.34	206.97	207.91	207.92
	7.31	8.69	8.50	0.05	0.19	1.05	1.10	0.45	0.00
IV. Medical care & health expenses	185.41	191.72	194.47	193.31	193.38	194.66	203.66	203.97	203.97
	5.93	3.40	1.43	0.01	0.04	0.66	0.29	0.15	0.00
V. Transport & communication	201.06	211.49	219.63	217.94	217.91	218.13	232.39	232.99	233.05
	5.10	5.19	3.85	0.06	-0.01	0.10	0.23	0.26	0.03
VI. Recreation, entertainment, education & cultural services	174.74	178.03	184.66	183.03	183.05	183.12	196.43	197.09	197.12
	3.49	1.88	3.72	0.02	0.01	0.04	0.08	0.34	0.02
VII. Misc. goods & services	147.95	164.03	184.85	179.82	180.35	183.01	205.07	205.10	205.12
	6.13	10.87	12.69	0.08	0.29	1.47	0.30	0.01	0.01

Note : Figures in italics indicate inflation over previous year/month

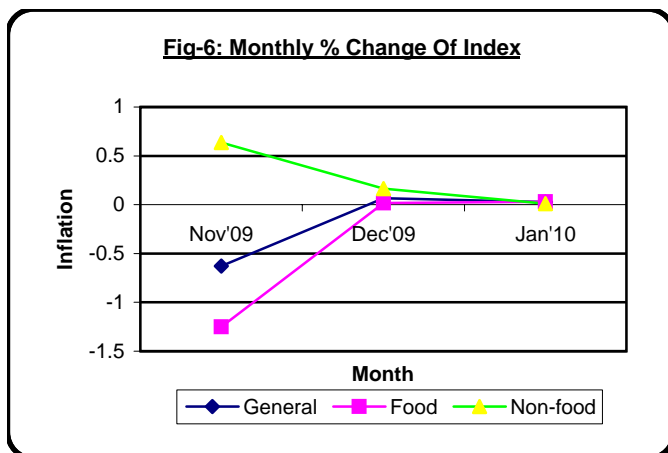
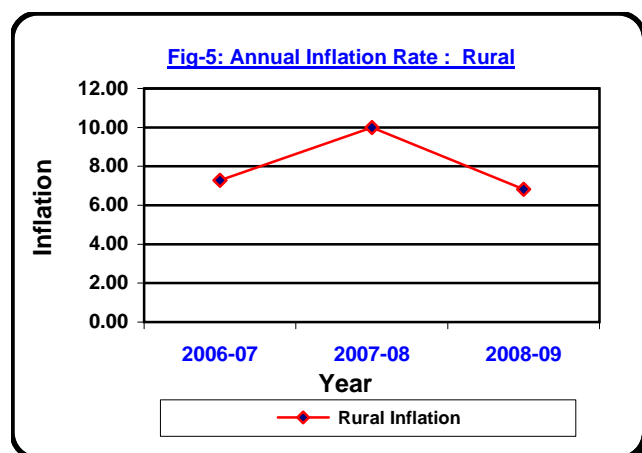


Table 4. Consumer Price Index (CPI) : Urban

(On Monthly Basis)

(1995-96=100)

CPI Classification	2006-07	2007-08	2008-09	2008-09			2009-10		
				Nov	Dec	Jan	Nov	Dec	Jan
General	172.73	189.65	201.49	200.63	199.36	198.77	217.22	217.50	217.54
	7.03	9.80	6.24	-1.54	-0.63	-0.30	-0.33	0.13	0.02
1. Food, beverage & tobacco	189.06	213.73	229.60	230.13	227.57	225.59	252.76	252.78	252.82
	8.54	13.05	7.43	-1.91	-1.11	-0.87	-1.16	0.01	0.02
2. Non-food	157.17	166.69	174.69	172.52	172.48	173.21	183.34	183.87	183.92
	5.34	6.06	4.80	-1.07	-0.02	0.42	0.76	0.29	0.03
I. Clothing & footwear	159.02	170.51	181.42	180.13	180.44	181.45	191.81	192.09	192.19
	6.93	7.23	6.40	0.02	0.17	0.56	1.75	0.15	0.05
II. Gross rent, fuel & lighting	138.41	147.54	148.24	146.27	146.11	146.86	152.60	153.05	153.09
	5.60	6.60	0.47	-2.24	-0.11	0.51	0.78	0.29	0.03
III. Furniture, furnishing, household equipments & operation	168.05	188.92	208.46	204.78	205.81	207.05	233.46	234.09	234.34
	8.08	12.42	10.34	0.02	0.50	0.60	0.43	0.27	0.11
IV. Medical care & health expenses	161.64	170.90	176.54	174.99	175.01	176.06	189.55	189.63	189.64
	3.30	5.73	3.30	0.01	0.01	0.60	0.18	0.04	0.01
V. Transport & communication	201.38	209.84	228.18	225.62	224.60	224.96	237.74	238.89	238.89
	4.60	4.20	8.74	-1.42	-0.45	0.16	0.61	0.48	0.00
VI. Recreation, entertainment, education & cultural services	163.51	167.16	173.59	171.54	172.01	172.05	180.34	180.80	180.84
	4.11	2.23	3.85	0.05	0.27	0.02	0.02	0.26	0.02
VII. Misc. goods & services	159.93	173.16	198.58	194.38	194.70	196.20	217.71	218.41	218.43
	4.79	8.27	14.68	0.21	0.16	0.77	1.25	0.32	0.01

Note : Figures in italics indicate inflation over previous year/month

