

**Table 1. Consumer Price Index (CPI) And Inflation Rate
(Point To Point)**

(1995-96=100)

CPI Classification	2006-07	2007-08	2008-09	2008-09			2009-10		
				Oct	Nov	Dec	Oct	Nov	Dec
NATIONAL									
General index	176.06	193.54	206.43	209.31	207.14	204.90	223.36	222.14	222.33
<i>Inflation</i>	7.22	9.93	6.66	7.26	6.12	6.03	6.71	7.24	8.51
Food index	184.18	206.79	221.64	226.88	223.98	220.64	244.54	241.55	241.59
<i>Inflation</i>	8.12	12.28	7.18	8.08	6.68	6.83	7.78	7.84	9.50
Non-food index	165.79	176.26	186.67	186.13	184.95	184.29	195.56	196.87	197.26
<i>Inflation</i>	5.90	6.32	5.91	5.95	5.25	4.76	5.07	6.44	7.04
RURAL									
General index	177.42	195.14	208.46	211.58	209.82	207.18	225.58	224.16	224.31
<i>Inflation</i>	7.30	9.99	6.83	7.31	6.40	6.26	6.62	6.83	8.27
Food index	182.18	203.93	218.38	223.71	221.45	217.79	239.95	236.95	236.99
<i>Inflation</i>	7.96	11.94	7.09	7.87	6.77	6.86	7.26	7.00	8.82
Non-food index	169.33	180.19	191.59	190.95	190.06	189.14	201.15	202.43	202.76
<i>Inflation</i>	6.10	6.41	6.33	6.21	5.68	5.10	5.34	6.51	7.20
URBAN									
General index	172.73	189.65	201.49	203.77	200.63	199.36	217.95	217.22	217.50
<i>Inflation</i>	7.03	9.80	6.24	7.12	5.43	5.45	6.96	8.27	9.10
Food index	189.06	213.73	229.60	234.60	230.13	227.57	255.72	252.76	252.78
<i>Inflation</i>	8.54	13.05	7.43	8.59	6.48	6.74	9.00	9.83	11.08
Non-food index	157.17	166.69	174.69	174.38	172.52	172.48	181.95	183.34	183.87
<i>Inflation</i>	5.34	6.06	4.80	5.28	4.13	3.88	4.34	6.27	6.60

Fig-1: Annual Inflation Rate

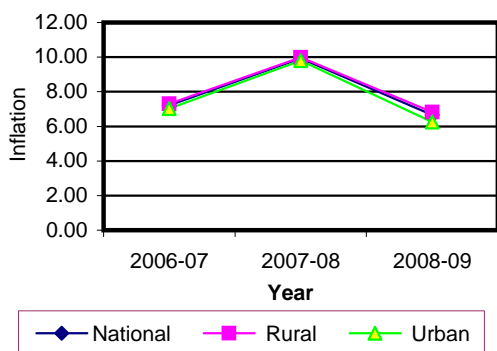


Fig-2: Monthly Inflation Rate

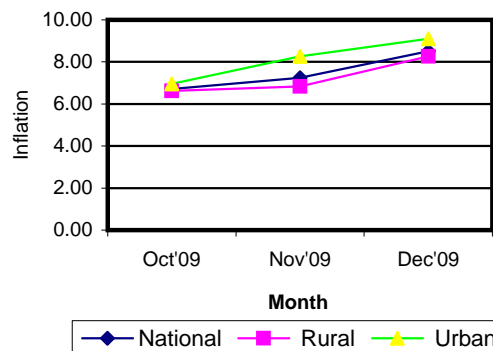


Table 2. Consumer Price Index (CPI) : National

(On Monthly Basis)
(1995-96=100)

CPI Classification	2006-07	2007-08	2008-09	2008-09			2009-10		
				Oct	Nov	Dec	Oct	Nov	Dec
General	176.06	193.54	206.43	209.31	207.14	204.90	223.36	222.14	222.33
	7.22	9.93	6.66	-0.39	<i>-1.04</i>	<i>-1.08</i>	1.62	<i>-0.55</i>	<i>0.09</i>
1. Food, beverage & tobacco	184.18	206.79	221.64	226.88	223.98	220.64	244.54	241.55	241.59
	8.12	<i>12.28</i>	<i>7.18</i>	-0.34	<i>-1.28</i>	<i>-1.49</i>	2.32	<i>-1.22</i>	<i>0.02</i>
2. Non-food	165.79	176.26	186.67	186.13	184.95	184.29	195.56	196.87	197.26
	5.90	<i>6.32</i>	<i>5.91</i>	-0.52	<i>-0.63</i>	<i>-0.36</i>	<i>0.24</i>	<i>0.67</i>	<i>0.20</i>
I. Clothing & footwear	156.79	164.53	173.10	171.50	171.74	171.98	179.64	181.51	181.80
	5.69	<i>4.94</i>	<i>5.21</i>	0.08	<i>0.14</i>	<i>0.14</i>	<i>0.31</i>	<i>1.04</i>	<i>0.16</i>
II. Gross rent, fuel & lighting	162.32	174.70	184.46	186.45	183.70	181.8	190.03	191.65	191.93
	6.78	<i>7.63</i>	<i>5.59</i>	-1.40	<i>-1.47</i>	<i>-1.03</i>	<i>0.17</i>	<i>0.85</i>	<i>0.15</i>
III. Furniture, furnishing, household equipments & operation	162.61	178.56	194.75	190.70	190.79	191.34	212.79	214.68	215.53
	7.54	<i>9.81</i>	<i>9.07</i>	0.07	<i>0.05</i>	<i>0.29</i>	<i>0.41</i>	<i>0.89</i>	<i>0.40</i>
IV. Medical care & health expenses	178.49	185.66	189.25	187.96	187.98	188.03	199.04	199.55	199.80
	5.23	<i>4.02</i>	<i>1.93</i>	0.02	<i>0.01</i>	<i>0.03</i>	<i>0.30</i>	<i>0.26</i>	<i>0.13</i>
V. Transport & communication	201.15	211.01	222.12	221.03	220.18	219.86	233.15	233.95	234.71
	4.95	<i>4.90</i>	<i>5.27</i>	0.04	<i>-0.38</i>	<i>-0.15</i>	<i>0.42</i>	<i>0.34</i>	<i>0.32</i>
VI. Recreation, entertainment, education & cultural services	171.47	174.86	181.44	179.64	179.69	179.84	191.63	191.75	192.35
	3.66	<i>1.98</i>	<i>3.76</i>	0.03	<i>0.03</i>	<i>0.08</i>	<i>0.94</i>	<i>0.06</i>	<i>0.31</i>
VII. Misc. goods & services	151.44	166.69	188.84	183.84	184.06	184.53	207.54	208.75	208.97
	5.72	<i>10.07</i>	<i>13.29</i>	0.23	<i>0.12</i>	<i>0.26</i>	<i>0.54</i>	<i>0.58</i>	<i>0.11</i>

Note : Figures in italics indicate inflation over previous year/month

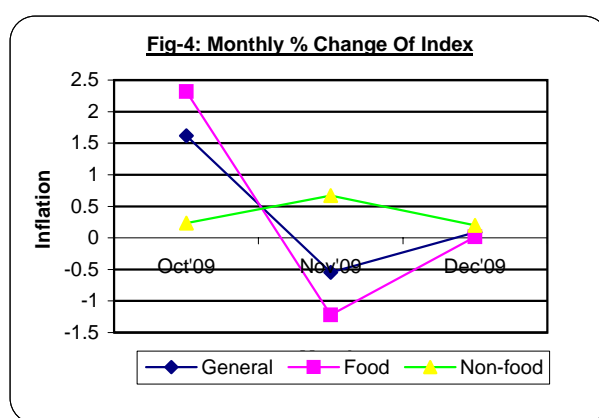
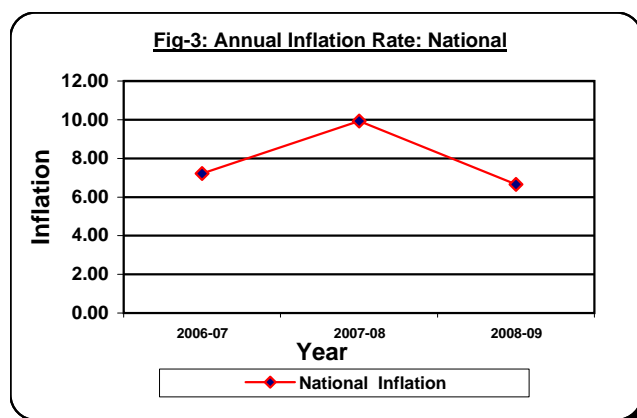


Table 3. Consumer Price Index (CPI) : Rural

(On Monthly Basis)

(1995-96=100)

CPI Classification	2006-07	2007-08	2008-09	2008-09			2009-10		
				Oct	Nov	Dec	Oct	Nov	Dec
General	177.42	195.14	208.46	211.58	209.82	207.18	225.58	224.16	224.31
	7.29	9.99	6.83	-0.54	-0.83	-1.26	1.98	-0.63	0.07
1. Food, beverage & tobacco	182.18	203.93	218.38	223.71	221.45	217.79	239.95	236.95	236.99
	7.95	11.94	7.09	-0.44	-1.01	-1.65	2.85	-1.25	0.02
2. Non-food	169.33	180.19	191.59	190.95	190.06	189.14	201.15	202.43	202.76
	6.10	6.41	6.33	-0.74	-0.47	-0.48	0.24	0.64	0.16
I. Clothing & footwear	155.88	162.08	169.68	167.97	168.29	168.51	175.99	177.28	177.57
	5.19	3.98	4.69	-0.05	0.19	0.13	-0.55	0.73	0.16
II. Gross rent, fuel & lighting	172.14	185.85	199.33	201.58	199.07	196.46	205.89	207.69	207.89
	7.17	7.96	7.25	-1.77	-1.25	-1.31	0.22	0.87	0.10
III. Furniture, furnishing, household equipments & operation	160.38	174.31	189.12	184.94	185.04	185.40	204.71	206.97	207.91
	7.31	8.69	8.50	0.04	0.05	0.19	0.09	1.10	0.45
IV. Medical care & health expenses	185.41	191.72	194.47	193.3	193.31	193.38	203.08	203.66	203.97
	5.93	3.40	1.43	0.01	0.01	0.04	0.35	0.29	0.15
V. Transport & communication	201.06	211.49	219.63	217.8	217.94	217.91	231.86	232.39	232.99
	5.10	5.19	3.85	0.02	0.06	-0.01	0.59	0.23	0.26
VI. Recreation, entertainment, education & cultural services	174.74	178.03	184.66	183	183.03	183.05	196.28	196.43	197.09
	3.49	1.88	3.72	0.03	0.02	0.01	1.12	0.08	0.34
VII. Misc. goods & services	147.95	164.03	184.85	179.68	179.82	180.35	204.46	205.07	205.10
	6.13	10.87	12.69	0.10	0.08	0.29	0.63	0.30	0.01

Note : Figures in italics indicate inflation over previous year/month

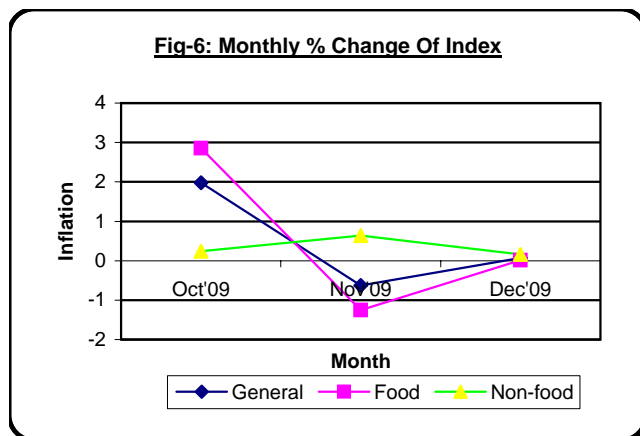
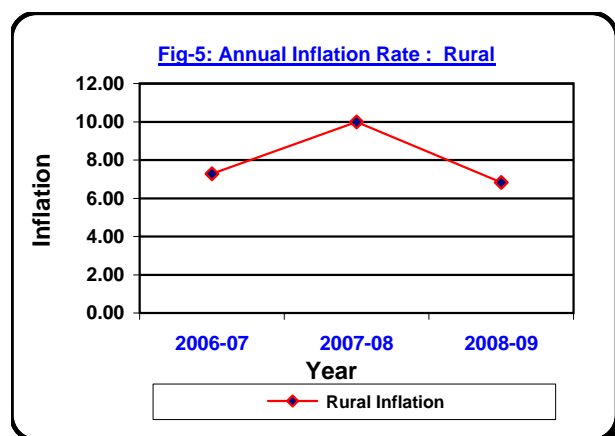


Table 4. Consumer Price Index (CPI) : Urban

(On Monthly Basis)

(1995-96=100)

CPI Classification	2006-07	2007-08	2008-09	2008-09			2009-10		
				Oct	Nov	Dec	Oct	Nov	Dec
General	172.73	189.65	201.49	203.77	200.63	199.36	217.95	217.22	217.50
	7.03	9.80	6.24	-0.04	-1.54	-0.63	0.73	-0.33	0.13
1. Food, beverage & tobacco	189.06	213.73	229.60	234.60	230.13	227.57	255.72	252.76	252.78
	8.54	13.05	7.43	-0.13	-1.91	-1.11	1.11	-1.16	0.01
2. Non-food	157.17	166.69	174.69	174.38	172.52	172.48	181.95	183.34	183.87
	5.34	6.06	4.80	0.07	-1.07	-0.02	0.21	0.76	0.29
I. Clothing & footwear	159.02	170.51	181.42	180.09	180.13	180.44	188.52	191.81	192.09
	6.93	7.23	6.40	0.38	0.02	0.17	0.24	1.75	0.15
II. Gross rent, fuel & lighting	138.41	147.54	148.24	149.62	146.27	146.11	151.42	152.60	153.05
	5.60	6.60	0.47	-0.13	-2.24	-0.11	0.03	0.78	0.29
III. Furniture, furnishing, household equipments & operation	168.05	188.92	208.46	204.73	204.78	205.81	232.45	233.46	234.09
	8.08	12.42	10.34	0-12	0.02	0.50	1.08	0.43	0.27
IV. Medical care & health expenses	161.64	170.90	176.54	174.97	174.99	175.01	189.21	189.55	189.63
	3.30	5.73	3.30	0.05	0.01	0.01	0.18	0.18	0.04
V. Transport & communication	201.38	209.84	228.18	228.88	225.62	224.60	236.29	237.74	238.89
	4.60	4.20	8.74	0.07	-1.42	-0.45	0.02	0.61	0.48
VI. Recreation, entertainment, education & cultural services	163.51	167.16	173.59	171.46	171.54	172.01	180.31	180.34	180.80
	4.11	2.23	3.85	0.04	0.05	0.27	0.46	0.02	0.26
VII. Misc. goods & services	159.93	173.16	198.58	193.97	194.38	194.70	215.03	217.71	218.41
	4.79	8.27	14.68	0.53	0.21	0.16	0.32	1.25	0.32

Note : Figures in italics indicate inflation over previous year/month

